

Issue No. 6  
September  
2002



# WISE NEWS

Workplace Industrial Safety and Environment Newsletter

This Occupational Health, Safety & Environment Newsletter is published by the Pulp and Paper Industry OHS&E Unit.

## IN THIS EDITION

★ A minute with...

★ Site Snaps

★ Breathe Easy

★ Recent Prosecutions

★ Safety Website

★ New Products

★ USA Fatality

CORRESPONDENCE:  
Denise Campbell-Burns  
National Coordinator  
Pulp & Paper Industry  
OHS&E Unit

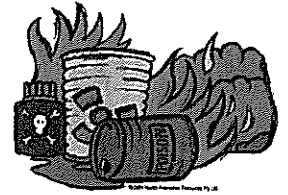
1st Floor,  
500 Swanston Street  
Carlton Vic 3053

Ph: (03) 9349 2344  
Fax: (03) 9349 2580  
d.campbellburns  
@ppwsafety.org

Recent months have seen a number of serious incidents across our industry, including electrical shocks; broken ribs; steam, friction and chemical burns and a fatality. Our aim must always be to prevent incidents and injuries, but when they do happen we must take the opportunity to learn from them. To ensure this happens a rigorous incident investigation process is essential.

### Incident investigations must always:

- ✓ *involve elected OHS representatives and management;*
- ✓ *gather all relevant evidence and data;*
- ✓ *be factual, objective and non-judgmental;*
- ✓ *identify the root cause of the incident;*
- ✓ *focus on preventing a reoccurrence;*
- ✓ *make recommendations to control;*
- ✓ *review and monitor the controls to make sure they are appropriate;*
- ✓ *not place blame on individuals.*

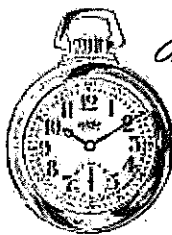


Superficial investigations that don't address the above points, will only scratch the surface and almost always identify the operator as the 'cause' of the incident. In depth investigations will identify the root cause of incidents and recommend controls that are appropriate to the incident, plant and the workplace.

Early reporting of hazards and near misses is also essential in the prevention of incidents and injuries. All employees are encouraged to utilise near miss reporting mechanisms in your workplace. Statistics show that for every serious incident there are 600 near misses. These are 600 lost opportunities to rectify the hazard and prevent a serious incident. Next time you see a hazard or near miss – report it – it may prevent someone being injured. If you need help reporting it, see your OHS Representative.

Until next time – stay safe!

*Denise*



*a minute with...*

### ANDREW BALL

Senior OHS Delegate  
AMCOR Speciality Boards Broadford



Describe yourself in 3 words... *HUMOROUS, FUN, SERIOUS*

One item you would take on a desert island... *CUP*

Holden or Ford... *FORD*

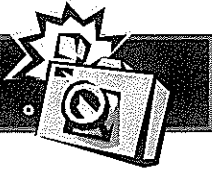
Who would you like to sit next to on a plane... *BOB HAWKE*

You barrack for... *GEELONG*

One piece of PPE you would never leave home without... *BOOTS*

Health & Safety at work means... *PEOPLES WELL BEING, FEWER PROBLEMS TO DEAL WITH & DEMONSTRATING COMPANY INTEGRITY*

# Site Snaps



## AMCOR



The OH&S Committee has endorsed a High Visibility Policy and sent out a final draft Eye Wear Policy. The Committee is also reviewing and updating the Personal Protective Equipment Policy, the S.A.N. Procedures and the OH&S Committee Constitution.

The Mill has been running evacuation trials. Training will commence in September for Confined Spaces. The Safe Operating Systems and work procedures continue to go well and training will shortly commence for 'Authorised Persons'.

The Asbestos Register is now up to date and work is proceeding to remove urgent classified asbestos. All First Aid Training is complete.

A big effort has gone into Amcare Training and the Mill is considering if it needs the current hard copy system or maybe a variant.



The month of July saw 12 significant risk assessments initiated with these being very detailed. Of the 100 plus actions initiated by these assessments, approximately 80% have been completed. Audits on completion dates will be undertaken this month.

Compliance audit to Amcor Standards was completed and the business has made significant progress in this area.

Red Cross conducted a first aid course tailored for our site which was very well received.

Paper Division held a safety conference in July to shape safety strategy for the next 5 years. The focus is to review all safety procedures including addition of auditing proforma and training sheets.

OHS representatives have recently completed refresher training on all aspects and functions of their roles and general OHS Management. This includes risk assessment and hazard identification.

Training on how to use PPE effectively will also be provided and is currently being planned.

## CARTER HOLT HARVEY



The site is currently considering software database systems for recording safety statistics and hazard identifications.

The maintenance department has operated for 12 months without a lost time injury and if all goes well, by late December should be close to 100,000 hours without a lost time injury.

Installation of a large catwalk and fall restraint system to it has just been completed so chip truck drivers, when spreading out and tarping up their loads, cannot fall from the top of their trucks.

The Myrtleford site has achieved SafetyMAP Advanced Certification and is in the process of going for ISO 14001 environmental standard.

## PAPERLINX



Shoalhaven employees will be having their hearing tests done during September. Each employee will have their earmuffs inspected to check they are in good order. A practical demonstration of correctly fitting earmuffs or earplugs will also be performed one-on-one.

At the end of the testing each employee will receive a copy of their tests results as well as the site receiving a global report on the effectiveness of Hearing conservation.

**Visited the OHS&E Website yet?**



Permit to Work & Isolation Procedures are still ongoing. Completion is expected Jan/Feb 2003.

Wesley Vale employees are doing their site inductions via computer and to date the participation rate is very creditable.

Manual Handling Assessments are still being worked through. A target of 80% of all areas is expected to be complete this year.

## NORSKE SKOG



Boyer's Emergency Response Plan has been revised and issued covering all contingencies including fire explosion, natural disaster, bomb threat and intrusion.

The Boyer Mill has experienced, in the year to date the following:

- 81 near misses
  - 3 medical treatment injuries
  - 1 lost time injury
- and**
- a total of 105 injuries

## wordsearch

A	Z	T	U	B	D	F	H
Y	T	E	F	A	S	N	A
E	C	B	D	S	E	O	I
N	I	F	G	S	R	I	J
V	N	R	K	E	H	T	H
I	C	I	P	S	L	A	E
R	I	S	O	S	Q	G	A
O	D	K	S	M	V	I	L
N	E	W	A	E	B	T	T
M	N	C	D	N	F	S	H
E	T	G	H	T	I	E	X
N	J	K	L	C	A	V	A
T	R	A	I	N	I	N	G
H	A	Z	A	R	D	I	L

All the words listed below but one appear in the puzzle - horizontally, vertically & diagonally. Which word does not appear?

- |               |          |
|---------------|----------|
| Assessment    | Oh's     |
| Environment   | Reps     |
| Hazard        | Risk     |
| Health        | Safety   |
| Incident      | Training |
| Investigation |          |



The AS/NZ Standard 1715:1994 – Selection, Use and Maintenance of Respiratory Protective Devices recommends that a trained central group maintain respirators. The problems associated with individuals cleaning their own respirators include the low priority for maintenance and the lack of time and adequate training.

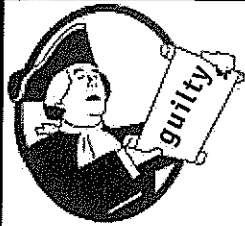
Sixty-five types of defects are possible in most half face respirators. A recent study found damaged face-pieces were the most frequently occurring defect (24%). This can lead to face-seal leakage. Dirty exhalation valves were the second most common (19%). This is serious, as valves are thin membranes separating the wearer from contaminated air. The third most common defect was found to be damaged head harnesses (15%). If the strap does not hold the respirator firmly to the face then leaks will occur.

### Inspection and Maintenance

All respirators, including new ones, should be inspected prior to use. The parts to check are:

- ✓ Exhalation and inhalation valves – Do they work? Are the sealing surfaces very clean?
- ✓ Filters – Are they the right ones for the job? Are they the correct brand for the face-piece? Are they damaged? Are they hard to breathe through? Is the sealing edge smooth and clean? Is the filter media leaking from the filter?
- ✓ Face-seal - Is it distorted, perished, cracked or otherwise damaged? Are parts correctly attached?
- ✓ Head harness – Is it damaged, perished or over stretched? Does it adjust properly?
- ✓ Battery – Is the flow sufficient? Has it been charged? Is it intrinsically safe? Is it damaged?
- ✓ Airlines – Are they clean inside? Are they damaged? Is the air supplied clean? Is the coupling working properly? Is the airflow of the compressor sufficient to feed the wearer and any equipment running from it?
- ✓ Visors – are they scratched, cracked or distorted?

Source: Jan Gardner  
Technical Manager 3M Australia Pty Ltd



## Recent Prosecutions



**CSR Timber Products** was recently **fined \$150,000** for an incident where a trainee received serious crush injuries. The injuries occurred when the trainee was trapped between a travelling unloader rack and board press. She sustained crush injuries to the head, chest and torso. The trainee was a contract worker who had no training or experience in using the machine and was not being supervised at the time of the incident.



Power supplier **Northpower** has been **fined \$160,000 with \$7,000 costs** after an incident where a fitter suffered full thickness burns to 50 percent of his body. The employee received a severe electrical shock when a metal tape measure, supplied by the employer, came into contact with a live electrical conductor. The employee was hospitalised for two months and unable to work for three months. His ability to perform his former duties has been severely restricted.



**A&C Packers** were **fined \$12,000** after an employee had parts of two fingers amputated. During powder packaging the machine malfunctioned, shutting itself down. The worker switched the machine off and tried to scrape some extra powder from the outlet pipe. His hand became caught by an auger screw, pulled into the outlet and crushed. The pipe opening was not guarded and there were no other controls in place to prevent hands contacting the auger screw.



An employee of **Danin Investments Pty Ltd** was **fined \$3,500 with \$11, 123.15 costs** after being found guilty of breaches of the OHS Act (1985) for failing to take reasonable care for the health and safety of others affected by his acts in the workplace. The employee, a workshop manager, instructed a co-worker to remove plastic coating from a metal box by applying a flammable substance and lighting it to burn it off. During the ignition process the co-worker received second degree burns to 35% of his body, including his hands and face. Danin Investments was also fined \$25,000 earlier this year.

[www.safety website.com.au](http://www.safetywebsite.com.au)



The OHS Unit of the Victorian Trades Hall Council has recently launched a new website specifically designed OHS Representatives: OHS Reps Networking for Safe Workplaces. *It can be found at:*

[www.ohsrep.org.au](http://www.ohsrep.org.au)

This project has the financial backing of WorkSafe and has been largely driven by the needs and requirements of OHS Representatives, as identified in a series of surveys.

The aim of the site is not only to provide information and resources to OHS reps, but also to actively involve the reps in OHS campaigns. Reps can currently access information, subscribe to the regular e-newsletter 'SafetyNet', receive the latest news items, submit their own stories, vote in on-line polls and have OHS related questions answered. In the future they will be able to participate in campaigns by sending their views, completing on-line surveys and making submissions on particular issues.

## New Products

Despite all the best efforts it is not always possible to totally eliminate all aspects of manual handling. Safe Lift Symbols allows items to be labelled and classified according to how they should be lifted. Safe Lift Symbols quantifies and qualifies items prior to lifting, therefore taking a pro-active, rather than reactive approach to manual handling. The symbols include a 'one person lift', a 'two person lift' or 'we need mechanical help to lift this item'. Further information on the Safe Lift Symbols can be obtained on 1800 818 660.



### recycling pump blast kills maintenance worker

A worker was killed instantly while repairing a pressurised pump at a paper recycling plant in Pennsylvania. Two other workers were seriously injured. The mixer pump ruptured and a steam blast exploded into the area the three men were working in. A witness reported the blast 'rattled' the factory. The incident closed the plant while OHS authorities conduct their investigations. The last fatal incident at the plant was in August 1999.

Source: CCH Australia Limited